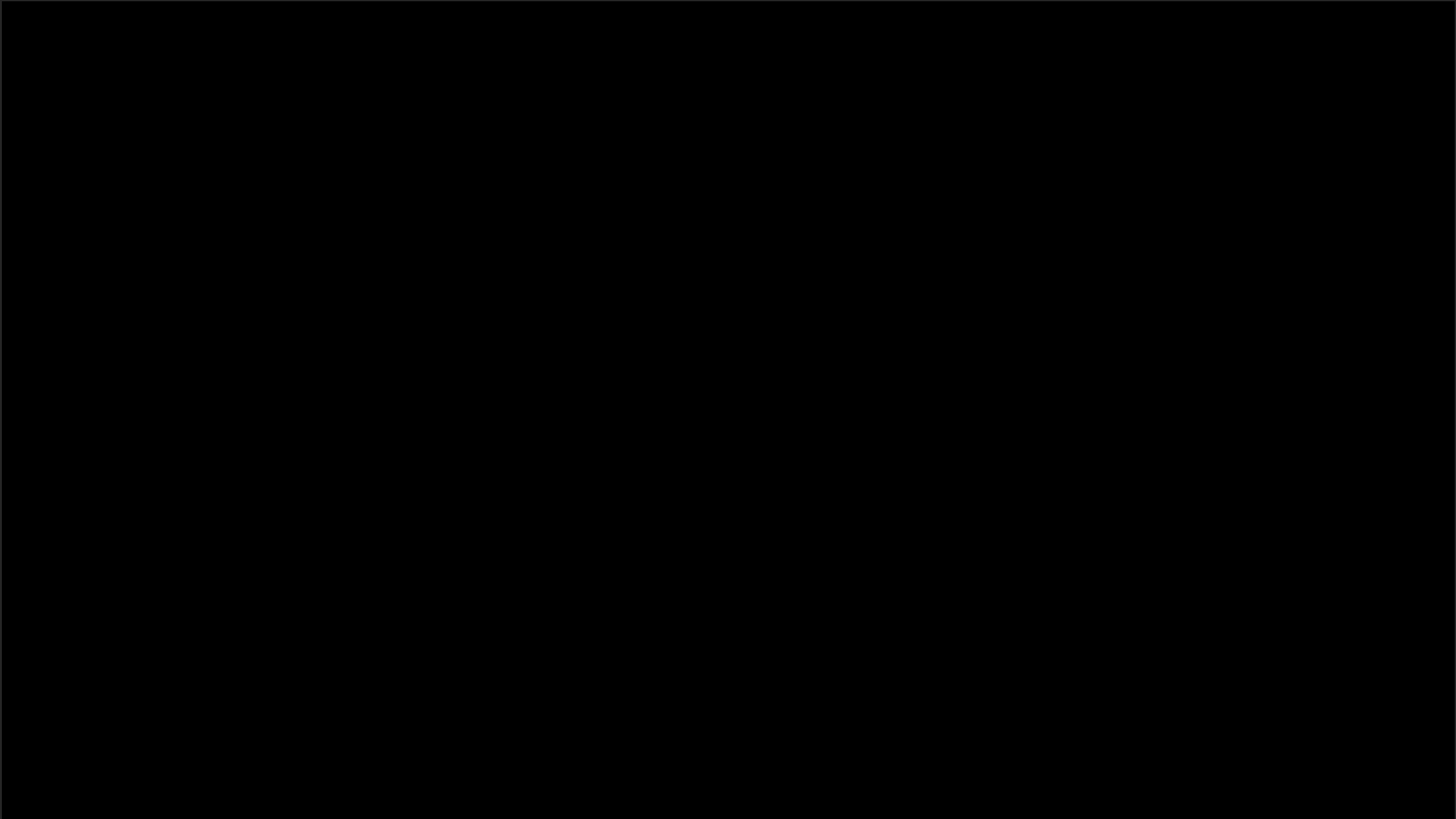


Santa Fe Community College





HELPING OUR COMMUNITY

More than 50,000 free hot meals were prepared by the Culinary department and distributed to the community in cooperation with World Central Kitchen and SFCC Foundation.

Campus Cupboard Food Pantry with support of SFCC Foundation distributed more than 250 boxes of food.



HELPING OUR COMMUNITY

SFCC Participated in the regional Operation Protective Gowns initiative. The 100 PPE gowns were used by health care staff as PPE at St. Vincent Regional Medical Center.



HELPING OUR COMMUNITY

Engineering Technologies students made more than 500 face shields. The PPE was distributed to underserved communities in collaboration with Make Santa Fe and other partners.

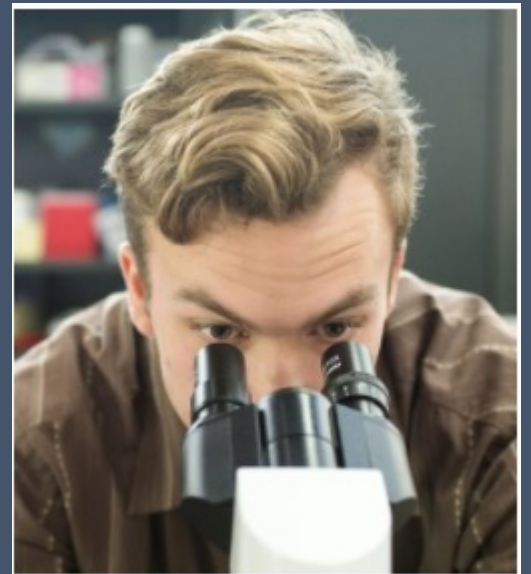


SFCC Unique - Demographics

- High percentage of dual credit students = 20% Average
 - High percentage of senior students (age 55+) = 20% Average
-

SFCC Academic Schools

- School of Arts, Design and Media Arts
- School of Sciences, Health, Engineering and Math
- School of Trades, Advanced Technologies and Sustainability
- School of Business, Professional Studies and Education
- School of Liberal Arts
- School of Fitness Education



Advising Services and Structure at SFCC

Centralized/De-Centralized Combination Advising Model

- Professional Academic Advisors Specialize by Assigned Academic Majors
- Professional Academic Advisors assigned to academic schools are physically located within the Academic Schools
- Professional First Year Advisors are located in the Welcome and Advising Center
- Student Affairs Advising is in partnership with Academic Affairs providing Associate Advisors in STEM majors, ATL Certifications, and Faculty Advisors

Advising services are offered in multiple modalities (In person, email, phone, video chat) Most services at this time are real time remote services.

Faculty Advisors

Degree Advising:

- Provide academic advising and support to advisees in their discipline or school
- Provide guidance and support to advisees in the work they do in their chosen major

Academic Advising Objectives:

- Provide advising to all degree-seeking students, new students attending SFCC for the first time, undecided first-year students and students in transition
- Develop an advising relationship that is collaborative, where each advisee feels a sense of connection, support and guidance
- Assist and guide advisees in developing a degree plan and program outline
- Provide referrals to advisees needing particular support services
- Assist advisees in reading degree audits
- Assist advisees in planning for transfer to other institutions

Professional Advisors

Support Services:

- Provide support to advisees in meeting their educational goals
- Connect advisees with necessary resources

COMING SOON

ACADEMIC AND CAREER PATHWAYS

Arts and Humanities

Business

Teacher Education

Law and Professional Studies

Trades and Sustainability

Health Sciences

Science and Engineering



Responding to Community Needs

School of Sciences, Health, Engineering and Math (unique that we serve rural northern NM)

Nursing
EMS/EMT/Paramedicine
Respiratory Therapy
Dental Assisting
Nutrition Certificate
Machining Program (LANL)
Massage Therapy Program
Engineering
Computer Sciences /IT

School of Liberal Arts

Liberal Arts Certificate
LADAC

School of Trades, Advanced Technologies and Sustainability

Controlled Environment Agriculture
Culinary Arts
Automotive Technician
Adobe Making

School of Arts, Design and Media Arts

Film
Arts

School of Business, Professional Studies and Education

Alternative Teacher Licensure
Early Childhood Education (English/Spanish)
Business/Accounting (scheduled for working adults)

SFCC Transfer to UNM

- Nursing
 - Biology
 - Chemistry
 - General Studies to UNM MLS and beyond
 - Liberal Arts Certificate
 - Engineering
 - Physical Sciences
 - Computer Sciences
 - Dental Assisting to Dental Hygiene
-

Resiliency

- Growing with students into an online learning environment and world
 - Having a support network, which can be family, friends, people on campus, that stranger on the train who will actually listen to you or a combination of all of them.
 - Knowing who to call when you think you can't do or accomplish something can be the saving grace at every possible point of exit.
-

Questions?

