

Incorporating National Student Exchange into Advisement



Why NSE for your student?

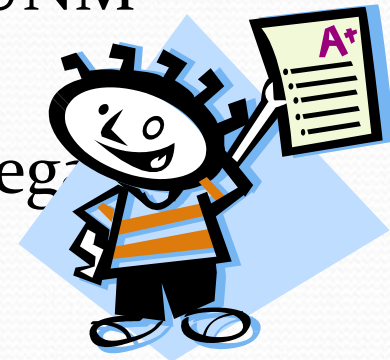
- Allows student to take classes and study at a different member college within the United States, while still paying UNM Tuition
- Allows student to meet new people
- Allows student to make connections for possible employment or grad school after your bachelors
- Allows student the opportunity for personal growth

Who is NSE for?

- NSE is great for those students who want a change, yet are not derailed by change.
- NSE is great for those students who are willing to put a bit of effort into working with their course schedules.
- NSE is great for those individuals that want to experience something different than UNM, but pay UNM Tuition.
- NSE is for students that make sure they have listened to all the details about the exchange and don't get caught up in "I am going to _____" and forget about everything else.

Eligibility Requirements

- Students need a 2.5 GPA (There are a few schools that require a GPA above 2.5)
- Students need to complete at least 24 hours of college credit prior to exchange, with at least 1 full-time semester being completed at the UNM Main Branch Campus.
- Students need to be in Good Standing with UNM (Financially, Discipline, and Academically)
- Students also need to be in Good Standing Legally



Costs of Exchange

- Misc. Costs May Include:
 - Insurance if not already covered
 - Special Course Fees
 - A few school also charge you their Student Fees
 - Application Fees
 - Technology Fees
 - NSE Fees
 - Travel Costs

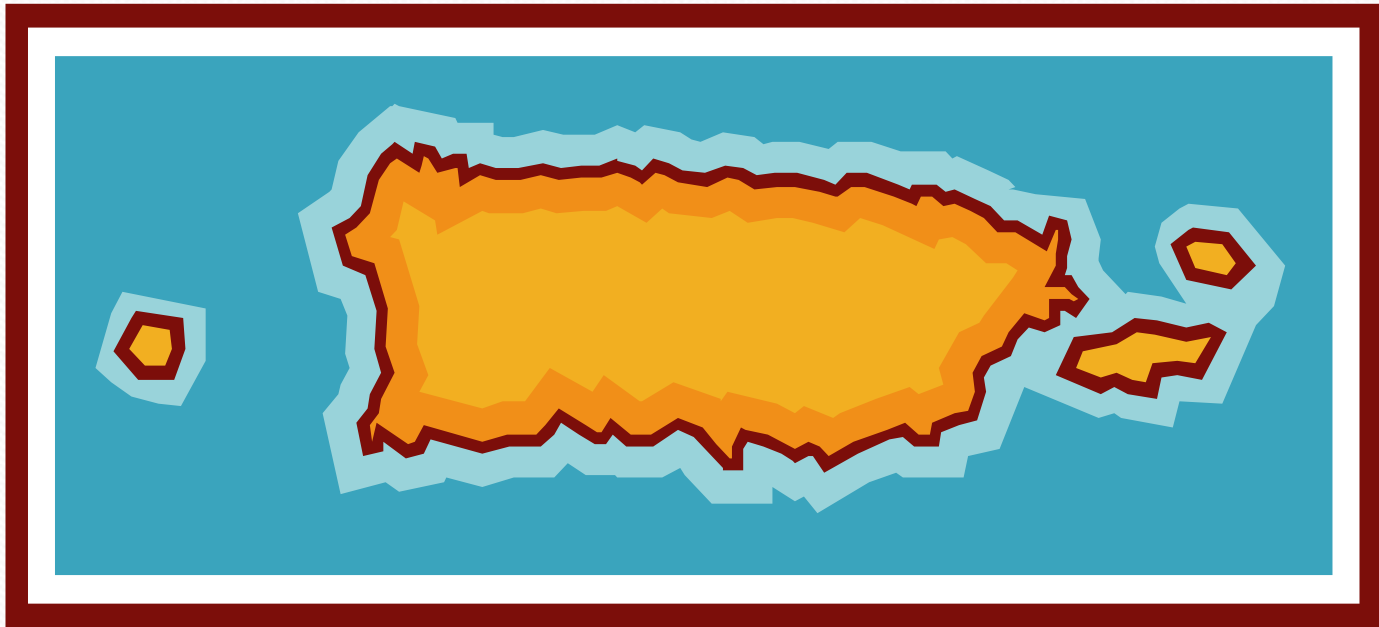


Costs and Financial Aid

- Remember, Students pay UNM's Tuition and Fees while on exchange.
- All UNM Financial Aid and Scholarships can be utilized for student, **except work-study**
- Tuition Rates and Adjustments (Billed at 15 – 18 Hours) This can impact student if they sign up for less hours at your host campus.
- Should they sign up for more than 18 or less than 15, what happens????



Language Proficiency?



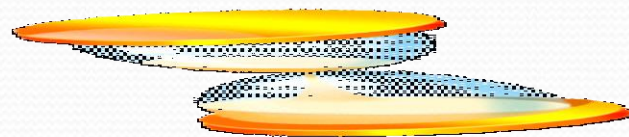
Semester Vs. Quarter Exchange

- Explain about the hours and the way they transfer back (.66 per credit hour)
- Time Frame of courses
- How can the hours issue impact a student? Graduation and Scholarships (you may need to appeal your scholarship)
- Remind them about sequence classes (you may need to take 3 classes to complete two at a quarterly school)
- It is best to go for the full year, but that is up to them.



How Long Can a Student Go On Exchange?

- They have one year of eligibility as a UNM Student
- They can go to two separate schools
- Can I extend my exchange if I initially said I only want to go for one semester?
- Can I shorten my exchange if I initially said I am going for the whole year?
- Remember, NSE does not preclude a student to study abroad(two years of eligibility)



Advantage of NSE over abroad programs

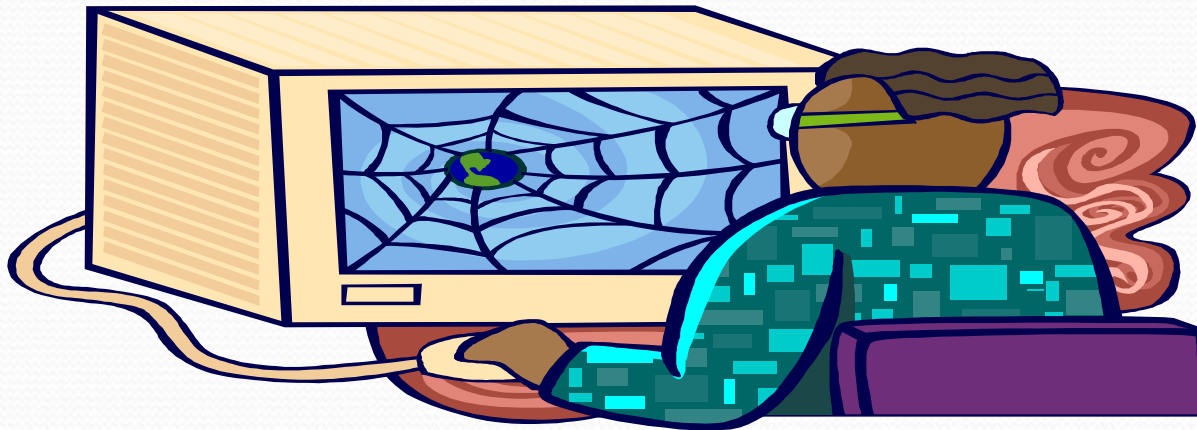
- When a student goes on NSE, they can typically get a pretty good idea about courses BEFORE they go out.
- Using TES, we can work collaboratively to determine how courses will transfer back
- International programs don't always offer this same possibility.

How Do I know if my Courses Transfer Back to UNM?

- If student is accepted, they will go through the course equivalency process, which will be explained in more detail at their orientation.
- The purpose of NSE is to make sure the student is not just not wasting time and taking courses that will not transfer back. Although....
- Anderson School Accreditation and 15 hour rule
- Will they be a Senior on Exchange?
- Courses will come back as an even match or as an elective, unless they are remedial courses or trades type courses. **DUPLICATE COURSES!!!**

NSE.ORG Website Review

- Directory Information NSE.ORG
- Campus Catalog Information
- Major Search



Host Campus Requirements

- Student must pay bills at ytheir home campus or they could face a number of consequences. Give examples!
- Should they have a live-in or a meal plan requirement, you have to live on campus, even if you have family there. There are no exceptions unless you get it in writing from someone who can grant that exception, that you do not have to live or eat there.
- Follow their university policies
- Student must take at least 12 hours (but remember your scholarship)
- Closed Programs and Limited Programs – Pay very close attention to these listings in the book.

Am I guaranteed placement?

- Unfortunately students are not, however I can tell you how you can help your chances of getting placed on the NSE Program.
 - Meet all deadlines
 - Fill out the application correctly
 - Write a good letter of intent
 - Submit good recommendation letters
 - Have a good GPA
 - Review the closed courses section of the booklet
 - Put down an OPEN School!!!
 - Some schools are very hard to get into!!!!!!!

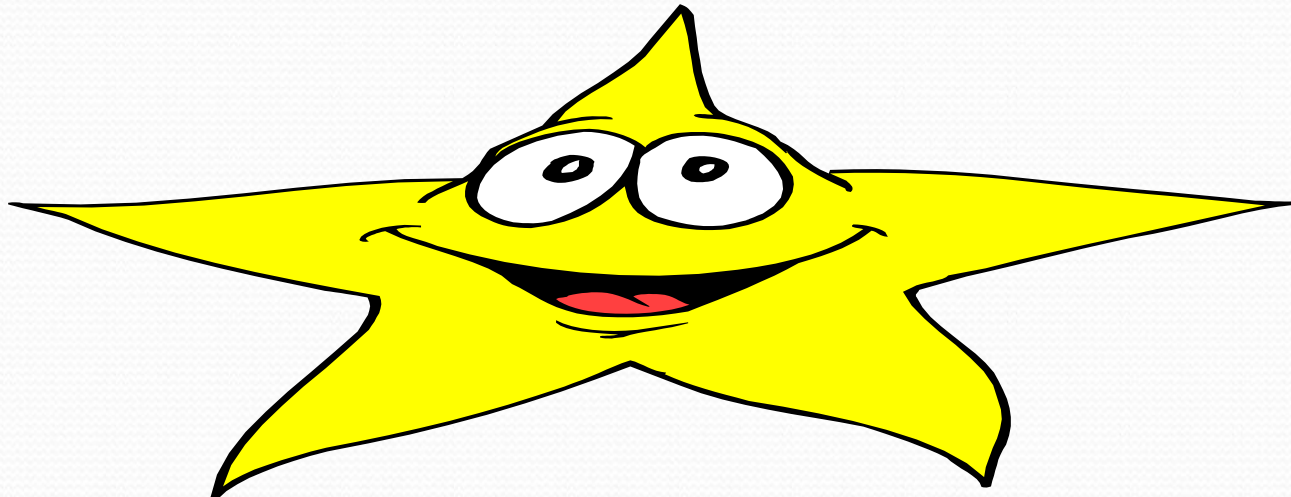


How Do Placements Happen?

- There is a placement conference in early March, where all the NSE Coordinators sift through the students who want to be accepted to each school.
- I will try to get your student placed at their first choice school first, if not, then I go to your second choice and so on. Some schools closed after the first placement round (ex.)
- If they do not get accepted to any of the schools they put down, then we will work on placing you at another school.
- Notification – I will e-mail them from the conference to inform you of your placement – of course we all hope it is your first choice.

So I Got Placed – Now What?

- Student will have to attend an Mandatory Outgoing Orientation for NSE Students (3rd or 4th week of March)
- They should have their courses evaluated for transferring back to UNM – why do I say should?



UC Santa Cruz

Students may have a chance to exchange to UC Santa Cruz. It is a separate program than NSE, but we treat as the same process and same application. Should they wish to know more, please schedule an appointment with us.



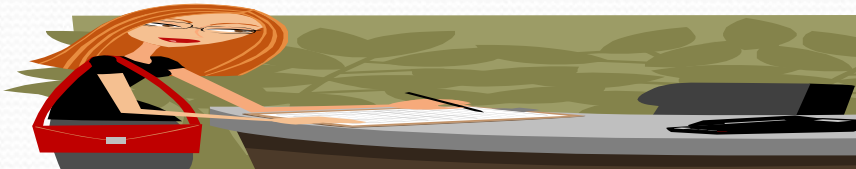
How To Apply

- Go to the UNM NSE Website and go to the application link.
- Schedule an appointment with us once they have their school choices decided on. We can assist with their school list and classes.
- Remember the Deadline to get all information in (FEBRUARY 22nd)

APPLICATION

What do I need to turn in?

- Completed Application
- Application fee \$200 (non-refundable)
- Two Letters of Recommendation
- Letter of Intent
- Deadline Again is **February 24th 5:00 p.m.** - I will take them after this, but it could hurt your placement.
- Turn applications into the Dean of Students Office or to the Office of Equal Opportunity.



Some Final Things To Remember About NSE!

- As you are all aware, grades do not transfer back, just credits.
- A student cannot use their time on exchange to build your residency requirement for the other school.
- They cannot use work-study on exchange.
- They must make sure to get their courses approved for transferring back to UNM.
- Remember to turn in applications by the priority deadline.

QUESTIONS and Contact INFO!

YOU CAN CONTACT ME VIA
PHONE at 277-3361 or by E-Mail
at: ggolden1@unm.edu

Additionally, you can contact Jeff
Hernandez in the event I am
unavailable:

jefhernandez@unm.edu

